



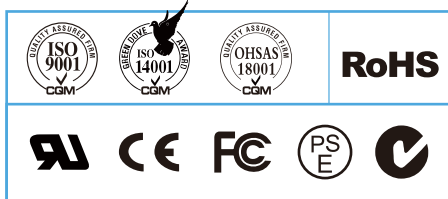
**ULMATRON
FRANCE**

JPC12-50

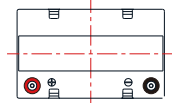
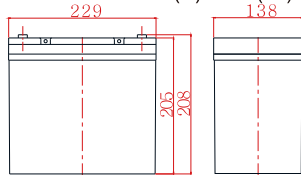


General Features

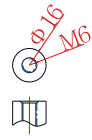
- › Lead-carbon composite negative plate, both capacitance and battery characteristics
- › Long cycle life, excellent deep cycle discharge ability
- › Excellent charge acceptance ability
- › Optimized capability of instant high-current discharging
- › Strong high and low temperature performance
- › Precision sealing technology



Dimension: 229(L)×138(W)×205(H)×208(TH) Unit: mm



Terminal Dimensions



Applications

- › Solar/ wind energy and other new energy storage
- › Hybrid vehicles, electric bicycles and other new energy vehicles
- › Other backup or cycle purposes

Specification

Nominal Voltage	12V
Nominal Capacity	50Ah
Design life	15 years
Terminal	M6
Approx. Weight	Approx 17.5kg (38.6lbs)
Container Material	ABS
Rated Capacity	50.0Ah 10Hour Rate (5.00A to 10.8V)
	39.6Ah 3Hour Rate (13.2A to 10.8V)
	32.1Ah 1Hour Rate (32.1A to 10.5V)
Internal resistance	Full charged at 25°C: 10.0 mΩ
Max. Discharge Current	600A(5S)
Operating Temperature	Discharge: -20 ~60°C (-4~ 140°F)
	Charge: -20 ~50°C (-4~ 122°F)
	Storage: -20 ~50°C (-4~ 122°F)
Charge current:	Max. 15.0A; Recom.5.0~10.0A
Charge Method (25 °C)	Float Charge:13.5-13.8V,recom.13.8V(-18mV/ °C)
	Equalize charge:13.8-14.1V,recom.14.1V(-24mV/ °C)
	Cycle charge:14.4-15.0V,recom.14.7V(-30mV/ °C)
Self discharge	3% of capacity declined per month at 25°C

Constant Current Discharge Characteristics Unit: A (25°C, 77°F)

FV/Time	5min	15min	30min	1h	2h	3h	5h	8h	10h	20h
1.60V	176	94.5	57.5	33.6	19.3	14.0	9.36	6.17	5.20	2.73
1.65V	171	91.8	56.6	33.5	19.2	13.9	9.27	6.13	5.15	2.72
1.70V	164	89.8	55.6	33.2	19.1	13.6	9.18	6.07	5.10	2.70
1.75V	151	86.9	55.1	32.7	18.7	13.5	9.09	6.03	5.05	2.69
1.80V	135	81.0	52.7	31.9	18.5	13.5	8.87	5.98	5.00	2.67
1.85V	121	72.2	48.1	29.5	17.5	12.6	8.43	5.73	4.85	2.63

Constant Power Discharge Characteristics Unit: W/cell (25°C, 77°F)

FV/Time	5min	15min	30min	1h	2h	3h	5h	8h	10h	20h
1.60V	295	166	105	63.6	36.5	26.6	17.8	12.0	10.0	5.40
1.65V	285	164	104	63.2	36.4	26.3	17.7	11.9	9.91	5.37
1.70V	283	162	104	62.6	36.3	26.2	17.6	11.8	9.82	5.35
1.75V	264	161	103	62.2	36.1	26.0	17.5	11.7	9.73	5.33
1.80V	242	152	100	61.7	36.0	25.9	17.3	11.6	9.64	5.30
1.85V	216	136	91.8	57.3	34.4	24.6	16.5	11.3	9.45	5.25

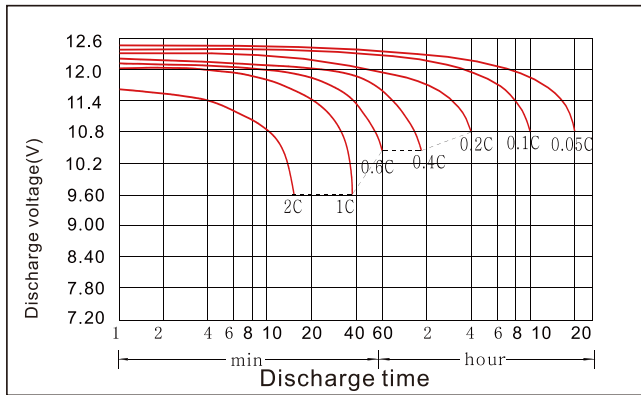
Disclaimer: Manufacturers have the right to self-modify the parameters of the product updates, please keep in touch with manufacturers to obtain the latest information.

MARQUE FRANÇAISE

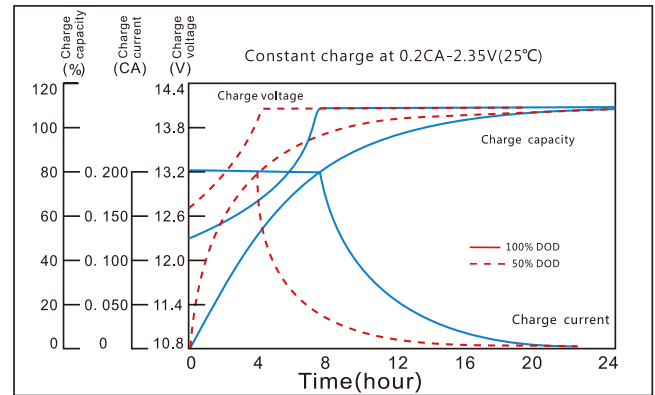


JPC12-50

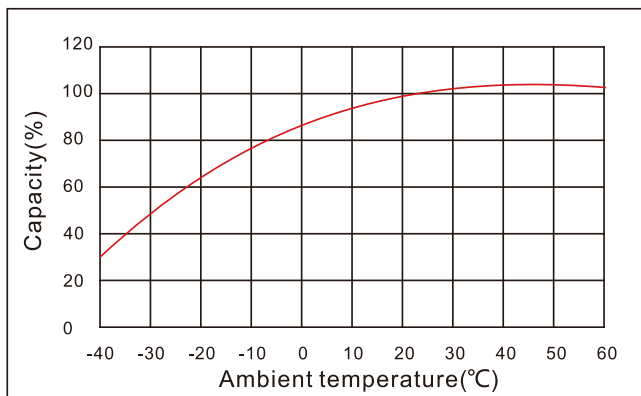
Discharge characteristic



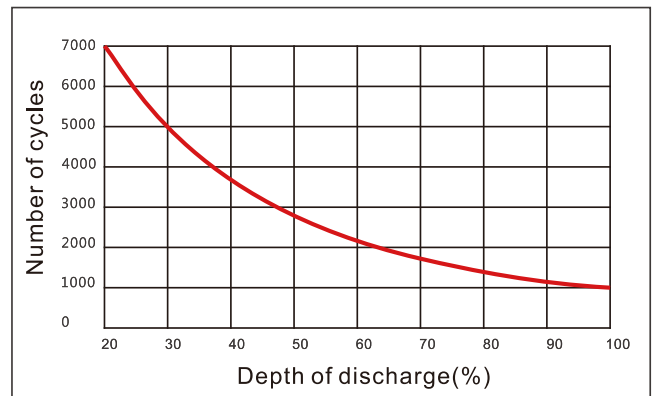
Charging characteristic



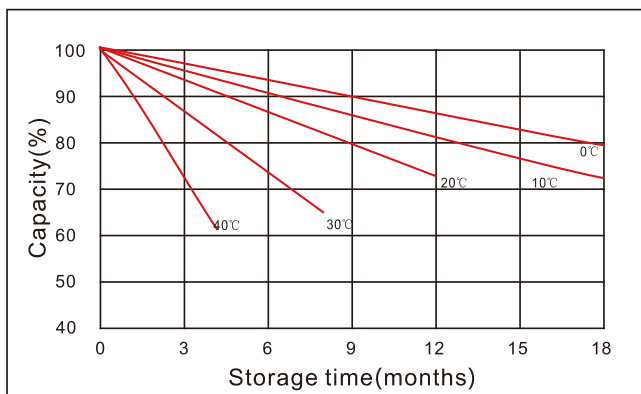
The effect of temperature on capacity



The effect of discharge depth on cycle life



Curves of self-discharge



The effect of discharge depth on cycle life

